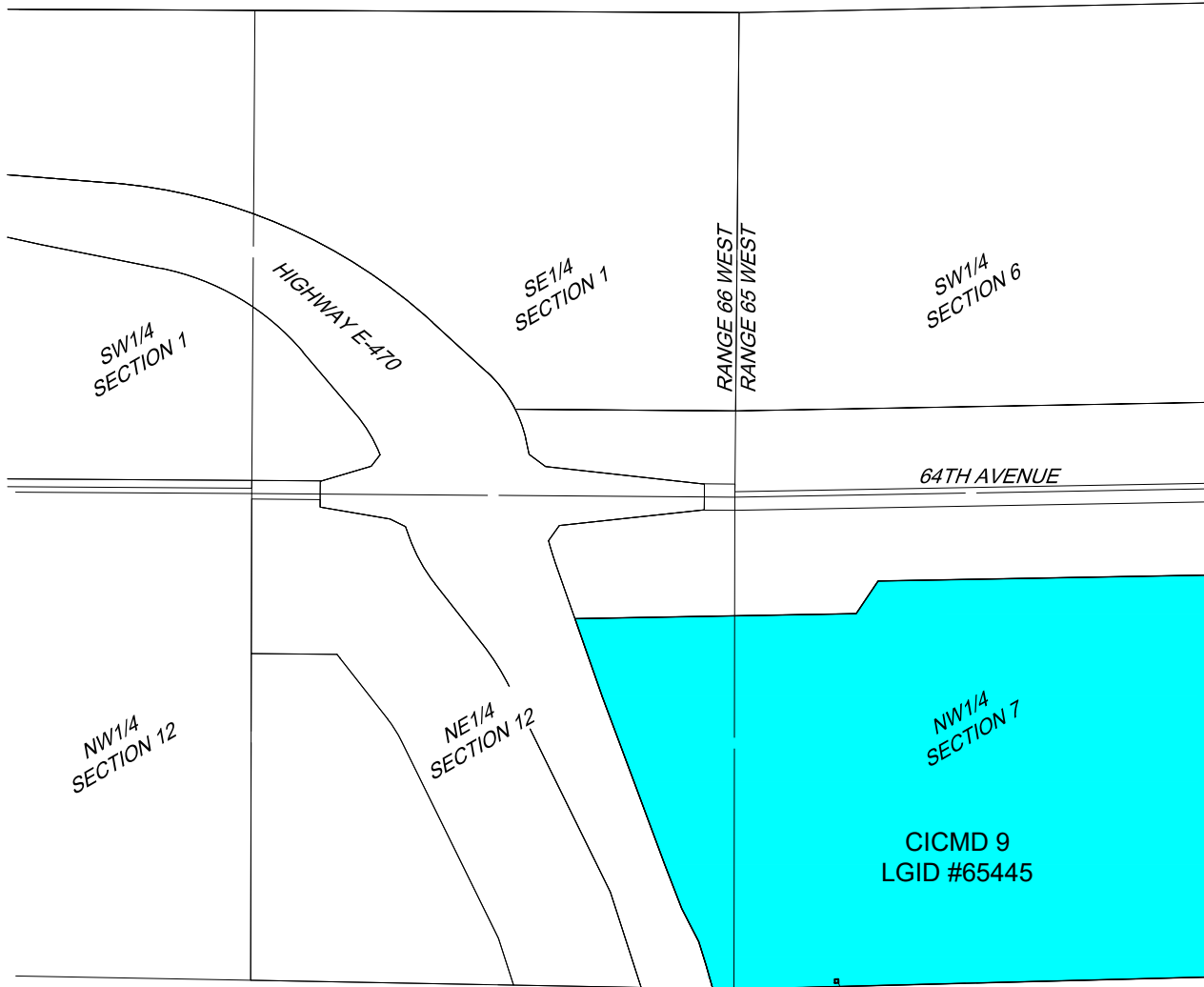


LOCATED IN THE NORTHWEST QUARTER OF SECTION 7, TOWNSHIP 3 SOUTH, RANGE 65 WEST OF THE SIXTH PRINCIPAL MERIDIAN, AND THE NORTHEAST QUARTER OF SECTION 12, TOWNSHIP 3 SOUTH, RANGE 66 WEST OF THE SIXTH PRINCIPAL MERIDIAN, CITY OF AURORA, COUNTY OF ADAMS, STATE OF COLORADO



DIRECTOR PARCEL NO.9



SCALE: 1"=1000'
ALL LINEAL
DIMENSIONS ARE IN
U.S. SURVEY FEET

COLORADO INTERNATIONAL CENTER
METROPOLITAN DISTRICT NO 9
BOUNDARY

JANUARY 4, 2021

MARTIN/MARTIN
CONSULTING ENGINEERS
12499 WEST COLFAX AVENUE, LAKEWOOD, COLORADO 80215
303.431.6100 MARTINMARTIN.COM